



nabd

USER MANUAL

POWERED BY:  Ducere

CONTENTS

01

Getting Started

- Introduction
- What's in the box

02

Basics

- Components of the Device
- Product Specifications
- Charging & Measurements
- Device Modes
- Navigating the Device Screens

03

Setting up with your smartphone

- Mobile phone requirements
- Downloading & Installing the app

04

Using the Nabd mobile app

- Register
- Connect the Device

05

App features

- The Home Screen
- Settings
- Logs
- Edit Username
- Mobile Remote Controls
- Firmware Updates

06

Protect and Care

- Protect Your Nabd Device
- Maintenance

CONTENTS

07

Compliances

- Regulatory & Safety
Notice

08

How to dispose of the product

09

Warranty Policy

10

Contacts

01

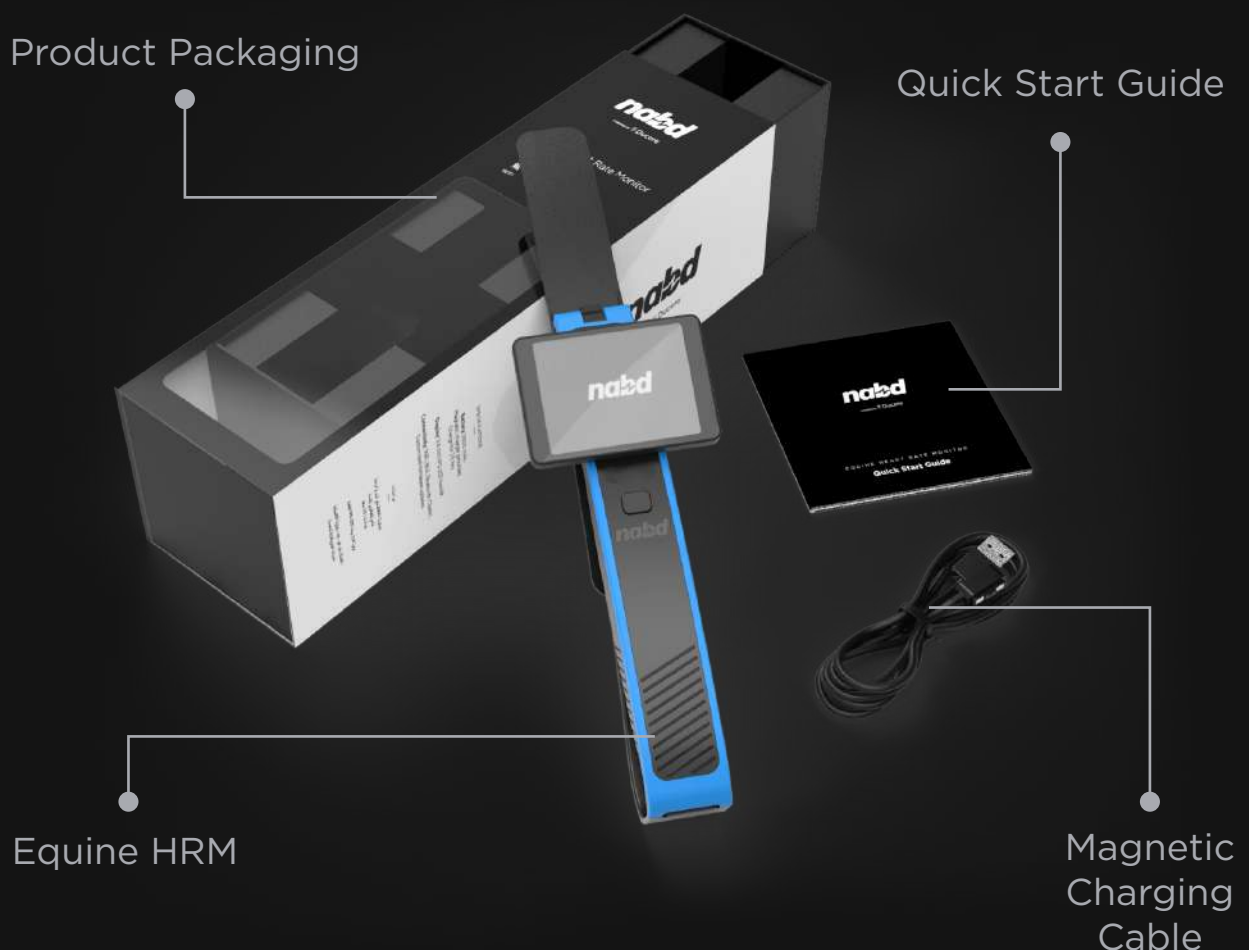
NABD EQUINE HRM

Introduction
What's in the box

Revolutionizing equine heart rate monitoring & tracking.

Presenting Nabd, a Heart Rate Monitor specially designed for Horses. Optimize and keep track of your horse's performance with this wireless digital tracker.

What's in the box.

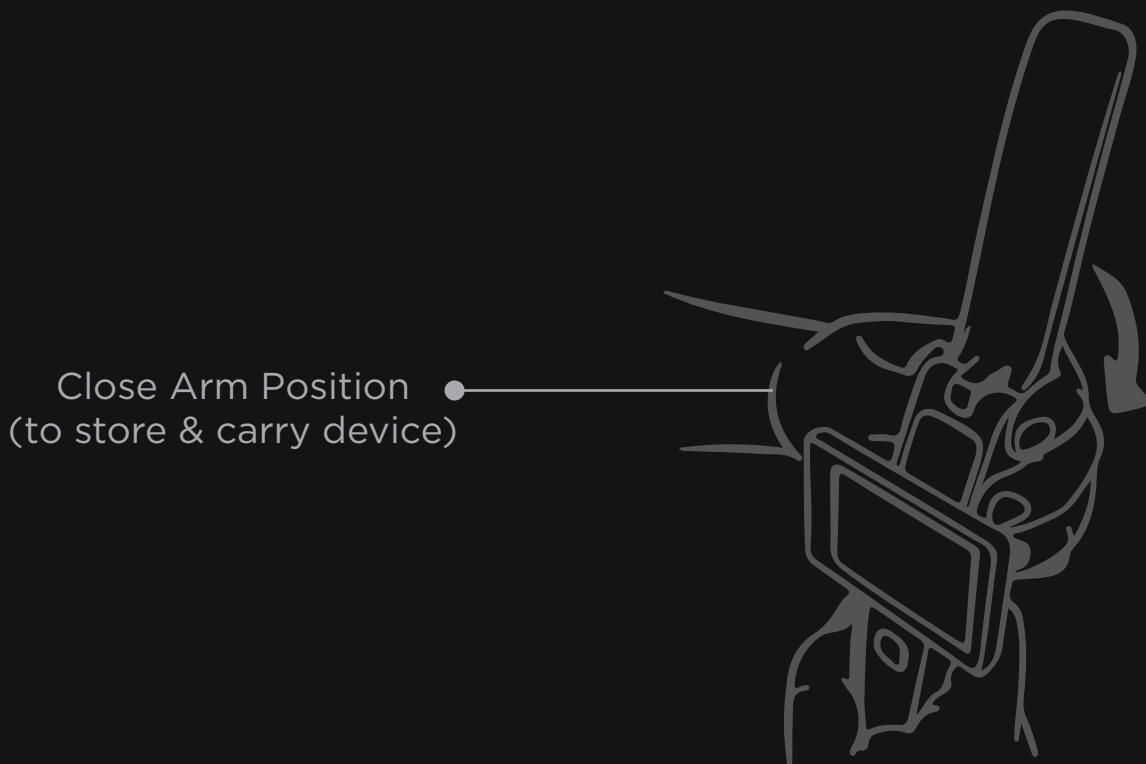
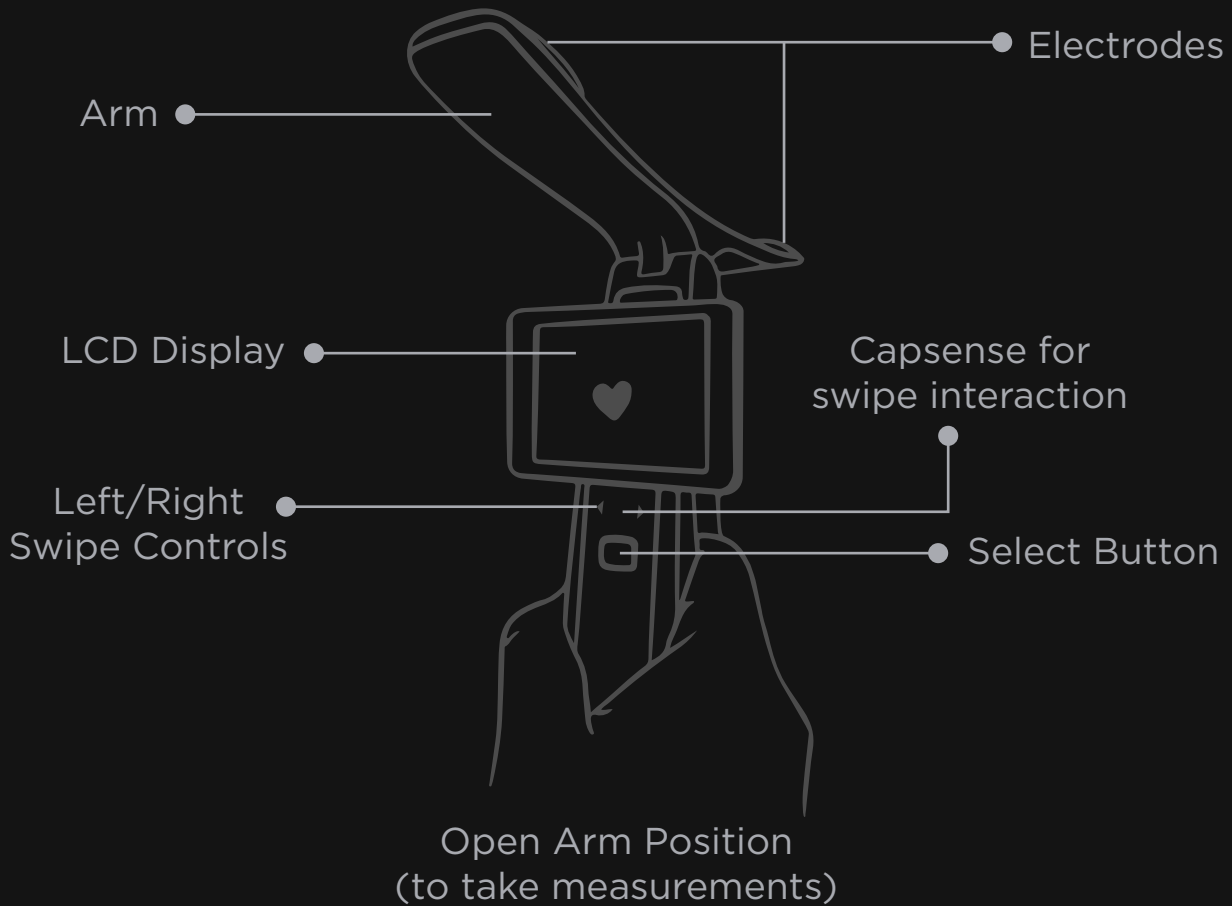


02

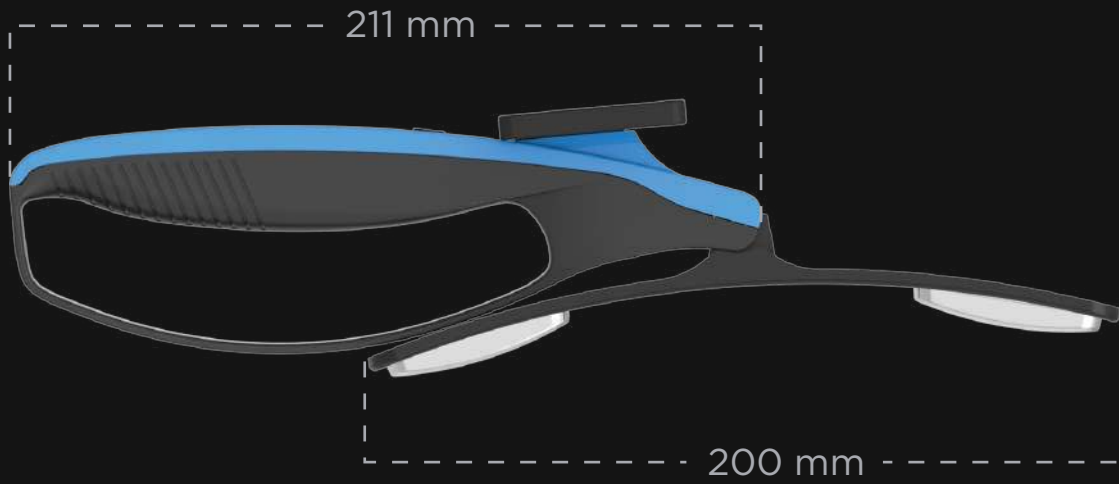
BASICS

Components of the Device
Product specifications
Charging & Measurements
Device Modes
Navigating the Device Screens

Components of the Device.



Product Specifications.



CONNECTIVITY

WiFi BLE
Bluetooth Classic
Customized firmware
updates

HOUSING

Aluminium.
Silicon grip coating,
ABS Plastic, TPU,
IP65 rating (297 x 35)mm

DISPLAY

2.4 inch IPS LCD backlit
35mm x 40mm

BATTERY

2600 mA Rechargeable
Magnetic charger provided
Charge for 2.5 hrs.

Charging & Taking Measurements.

CHARGING:

Charging the device is mandatory before first use.

Plug the magnetic charging USB cable provided into the socket as shown in the image.



Connect the USB cable to a power adapter and plug it into a power source. You will see a charging symbol in LCD Display. Charge the device for 2.5 hrs.

Put the device on charge whenever you see the battery indicators getting low in the LCD screen.

HOW TO TAKE MEASUREMENT:



Make sure the device is switched on and the arms are in open position.

Make contact with the horse. Always ensure the measurement area of the horse and the electrodes are wet.



You will see a heart icon blinking that indicates a contact has been established.



Keep the contact steady for atleast a few seconds to record a reading.





After completing the measurement. Close the arm to store.

Charge the device as required.



Device Modes

There are two usage modes to take readings in the Nabd Device, User Mode & Race Mode. The default mode is the User Mode.



User Mode appears when you will switch on the device. Use during training to view trends in the heart rate.

USER MODE

Get to the **Race Mode** by double pressing the Select button. Use this during Endurance races to check if the heart rate surpasses the threshold within 15 or 60 sec.



RACE MODE

Navigating the Device Screens.



Long press the **Select Button** to turn the device on / off .

Press the select button once and to get select an option.

Left Touch to navigate left within options on a screen.

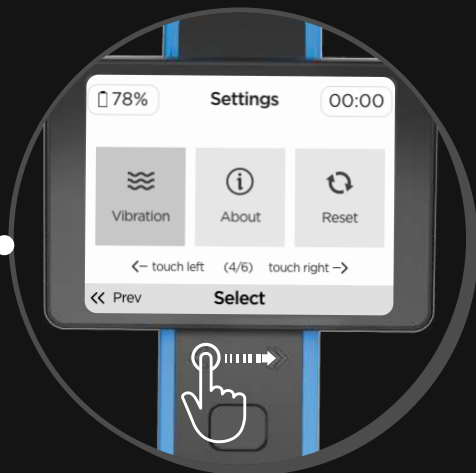




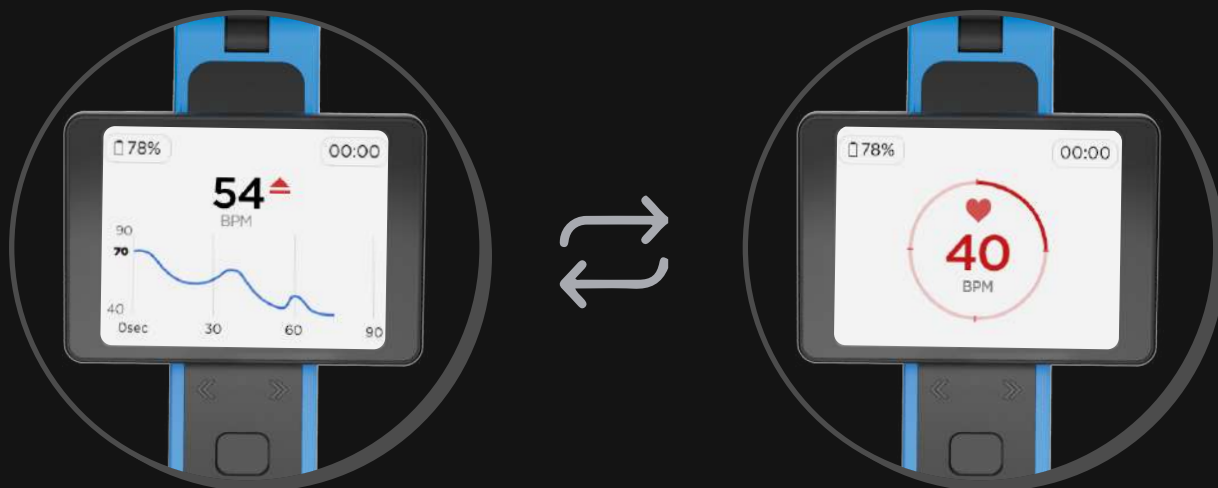
Right Touch to navigate right within options on a screen



Swipe left to switch to the previous screen.



Swipe right to switch to the next screen.



User Mode

Race Mode

Double Press on the **Select Button** to switch the device screen from User Mode to Race Mode for taking the measurement.

03

SETTING UP WITH YOUR SMARTPHONE

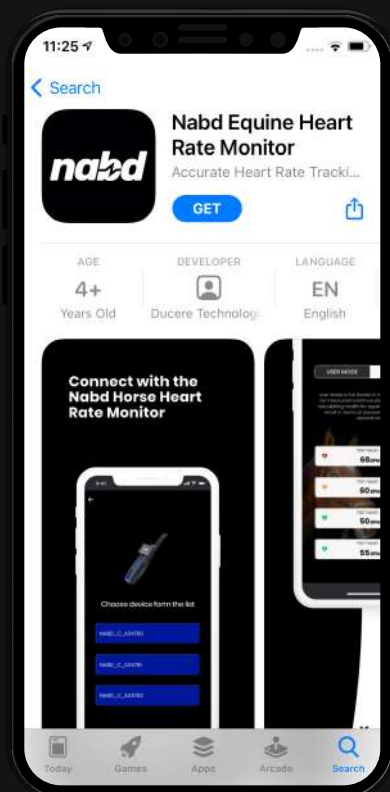
Mobile phone requirements
Downloading & Installing the app

Mobile Phone Requirements

Minimum Requirements for iOS phones:
iOS 13 onwards / Apple iPhone 6s or newer device.

Minimum Requirements for Android phones:
Android Version 7 or later.

Downloading & Installing the app



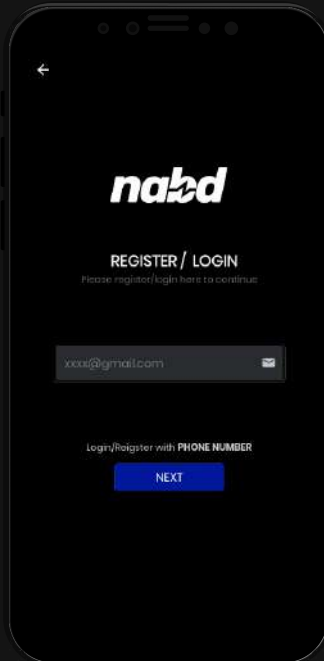
You can find the Nabd app on the App Store or Play Store by searching for “Nabd Equine Heart Rate Monitor.” If you already have the Nabd app installed, check regularly for updates to make sure you have the latest version.



LET'S START WITH NABD APP

Register
Connect the device

Register



Once you have downloaded the app, you can register using:

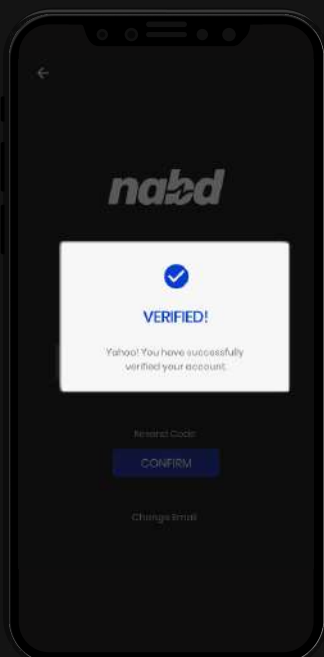
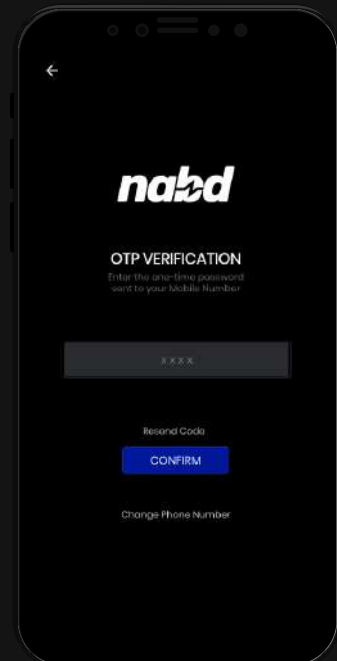
- Email ID
- Phone Number

Registering with Email ID / Phone No.:

Enter your email ID or Phone no. and press the Next button.

One-Time Password Verification:

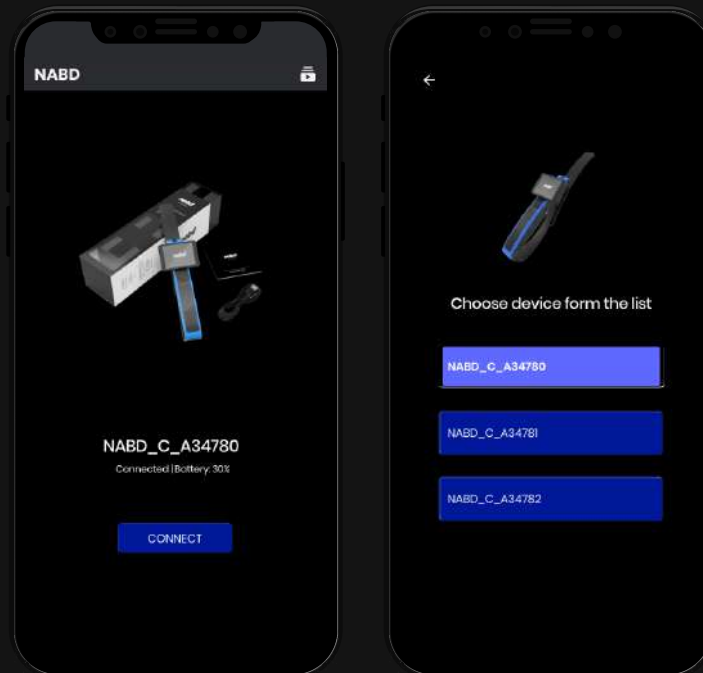
You will receive an OTP code for verification on your email or phone number. Write the verification code and press the confirm button.



Account Verified:

Once you receive the verified pop-up screen, you have successfully registered.

Connect the Device



After registering your account, connect your Nabd device to the mobile app.

Place your device next to your phone and make sure that the Bluetooth is turned on in the Nabd HRM device settings.

Choose your Nabd Device from the list to connect.

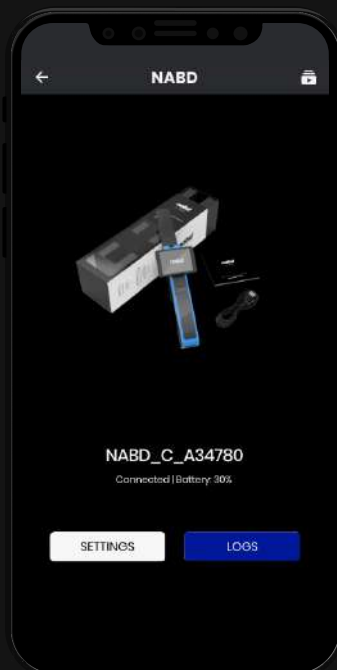
From the next time, the app will automatically connect to your Nabd device. In case your device gets disconnected, you can repeat this process.

05

APP FEATURES

The Home Screen
Settings
Mobile Remote Controls
Firmware Updates
Logs

The Home Screen



The home page of the Nabd app has two options:

Settings: Access all the Nabd device settings & controls from this section.

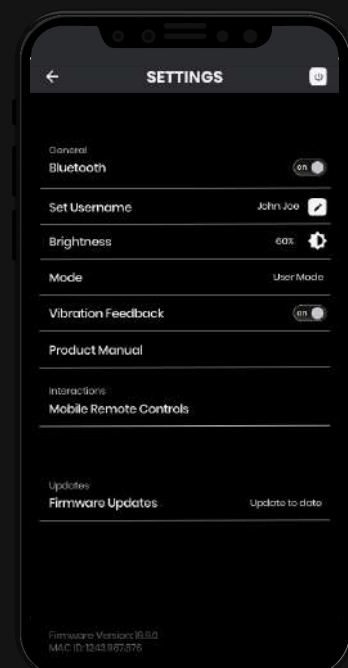
Logs: Access the previously recorded heart rate readings to track your horse's performance accordingly.

Settings

All the app related settings like set username, turning off vibration feedback, **mobile remote control**, **Firmware updates** and logout can be found by clicking on the Settings button in the home screen.

Mobile Remote Control: You can mirror your device screen / operate your device from the mobile with this option.

Firmware Updates: Download and update the firmware of your Nabd HRM device with this option.

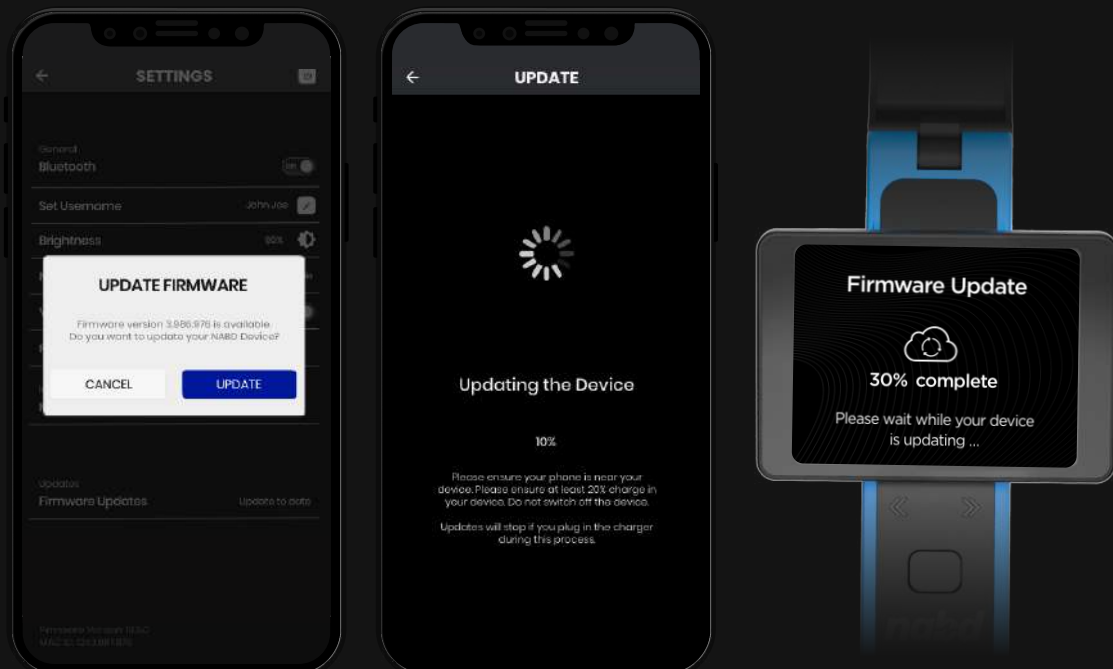


MOBILE REMOTE CONTROLS



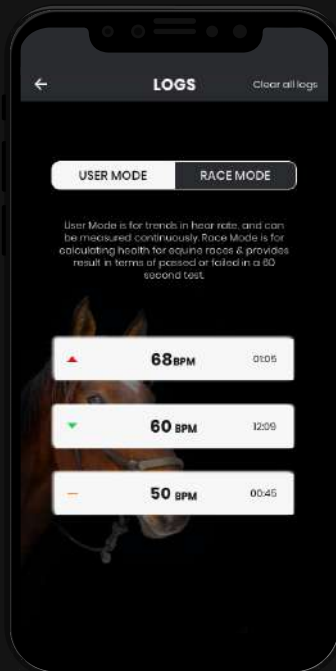
Click on Mobile Remote Control on the settings screen to access & control your Nabd HRM display.

FIRMWARE UPDATES



We are constantly improving the Nabd device. You can update the firmware of your Nabd device through the app by clicking on the Firmware Updates. Please ensure your device is charged and near the phone while upgrading.

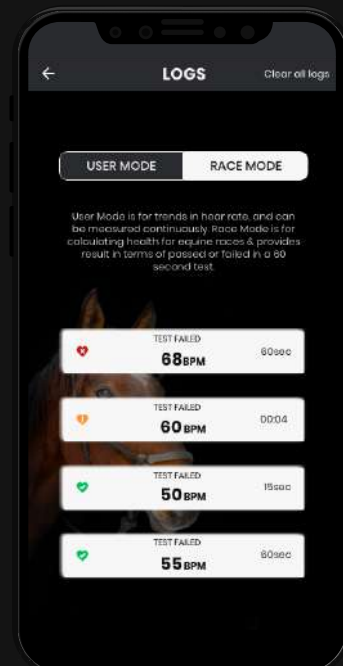
Logs



In Logs screen you can find all the previous heart rate readings listed under the User Mode and Race Mode tabs.

User Mode: Clicking on the user mode tab shows all the readings taken in that mode.

Race Mode: Clicking on the race mode tab shows all the readings taken in that mode.

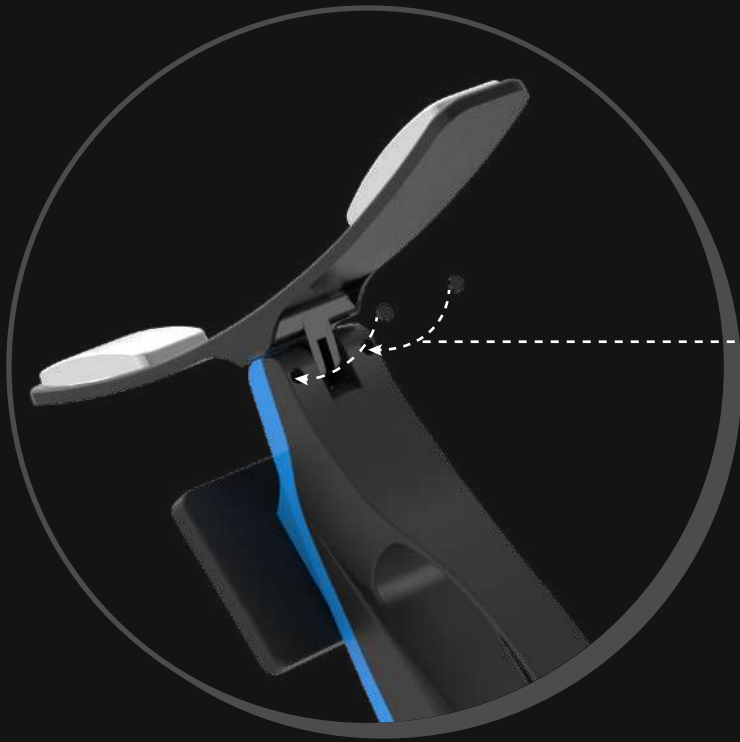


06

PROTECT & CARE

Protect Your Nabd Device
Maintenance

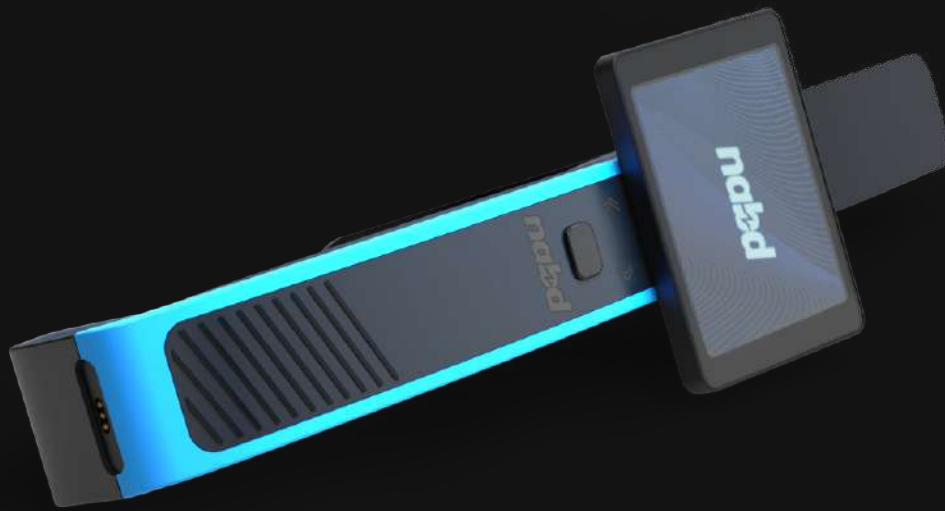
Protect Your Nabd Device



Stick on the
screw area.

Stick these anti-corrosive plugs
onto the screw area as shown in the image to protect
your device against corrosive or hard water.

Maintenance



Charge the device for 2.5 hrs



Do not submerge in water or other liquids for more than a minute.



Avoid using device near highly flammable solids or liquids.



Clean device with a clean, soft and damp clothes. Do not use detergent powder or chemical agents (such as alcohol or benzene) to clean the device.

07

COMPLIANCES

Regulatory & Safety Notices

Compliances

This device complies with Part 15 of the FCC Rules. Operation is subject to the following two conditions:

- 1) This device may not cause harmful interference, and
- 2) This device must accept any interference received, including interference that may cause undesired operations.

Changes or modifications not expressly approved by the party responsible for compliance could void the user's authority to operate the equipment. This equipment has been tested and found to comply with limits for a Class B digital device, pursuant to Part 15 of the FCC rules.

These limits are designed to provide reasonable protection against harmful interference in a residential installation. This equipment generates, uses and can radiate radio frequency energy and, if not installed and used in accordance with the instructions, may cause harmful interference to radio communications.

However, there is no guarantee that interference will not occur in a particular installation. If this equipment does cause harmful interference to radio or television receptions, which can be determined by turning the equipment off and on, the user is encouraged to try to correct the interference by one or more of the following measures:

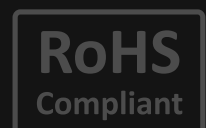
01. Re orient or relocate the receiving antenna.
02. Increase the separation between the equipment and receiver.
03. Connect the equipment into an outlet on a circuit different from that to which the receiver is connected.
04. Consult the dealer or an experienced radio/TV technician for help.

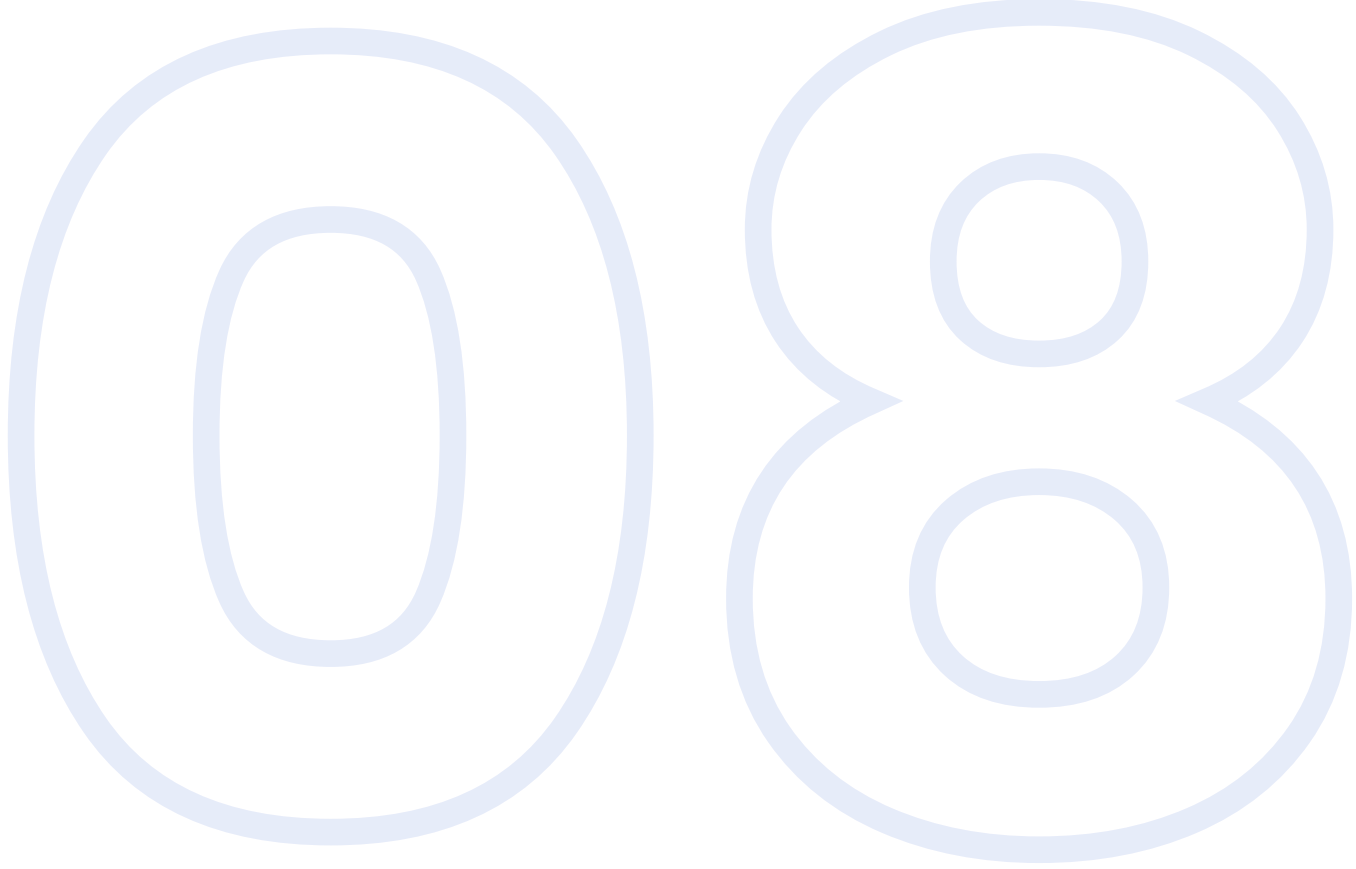
Product Specifications - Equine Heart Rate Monitor:

Rechargeable Li-Pol Battery : 3.7V, 2800mAh

Operating Temperature: 0° C to 50° C; Storage Temperature: -20° C to + 35° C

FCC ID: 2AC7Z-ESPWROOM32, IC: 21098-ESPWROOM32





HOW TO DISPOSE OF THE PRODUCT

How To Dispose Of The Product

Environmental-friendly disposal

Old electrical appliances must not be disposed of together with the residual waste, but have to be disposed of separately. The disposal at the communal collecting point via private persons is for free. The owner of old appliances is responsible to bring the appliances to these collecting points or to similar collection points. With this little personal effort, you contribute to recycle valuable raw materials and the treatment of toxic substances.

Note: There are no user serviceable / replaceable parts inside the device, including the battery. Please contact Customer Service at contact@duceretech.com for any help or queries.

09

WARRANTY POLICY

Warranty Policy

This product has been created and crafted in keeping with the highest standards of quality.

However, in case of any defects in material or workmanship the device will be replaced at no charge within a period of 1 year from the date of purchase.

Please keep proof of purchase to claim warranty.

Terms:

1. One year warranty effects from the purchase date.
2. Warranty covers any manufacturing technical defect excluding breakage.
3. Warranty is void if repairing without our consent.
4. The warranty does not cover faults resulting from operation, careless handling or not following instruction.

10

CONTACT

Contact

Find out more about you Nabd on the Ducere website.

LEARN MORE:

www.ducere.io/nabd

Lechal
222B West Marredpally,
Secunderabad - 500026
Telangana, India

CONTACT US:

contact@duceretech.com

Ph: +91 40 27713000
+91 40 27711700
www.ducere.io
www.ducere.io/nabd



© 2021 Ducere Technologies Pvt. Ltd., Telangana, India. All rights reserved.

Ducere is trademark of Ducere Technologies.

Bluetooth is a trademark of Bluetooth SIG Inc. IOS is a trademark or registered trademark of Cisco in the U.S. and other countries and is used under license. Android is a trademark of Google LLC.

This product IS NOT A MEDICAL DEVICE and should not be used to diagnose or treat any medical condition. Consult your veterinarian for prevention diagnosis and treatment.